

Tottenham Central School



Principal: Amanda Thorpe

**Week 5 Term 4
Thursday, 4 November, 2021**

Principal's message

Updated Level 3 COVID Guidelines

This week, the Minister has announced that from 8 November all NSW schools will move to updated Level 3 settings that bring school operations more in line with what is allowed in the community.

From 8 November

Our school will operate on updated Level 3 settings for the rest of Term 4 2021, with the following activities allowed in a COVID-safe manner:

- Assemblies and presentations are allowed outdoors, with cohorts separated and physical distancing in place. Fully vaccinated visitors (including parents and carers) are only allowed to attend if completing a specific role (such as presenting) and at the invitation of the school.
- Community use is allowed outside of school hours (including P&C meetings) with COVID-safe plans in place – in line with public health requirements.
- Dancing, bands, ensembles, and music classes will be allowed within cohorts. Instruments that rely on breath, as well as singing and chanting, are not permitted in Term 4.
- Excursions are allowed outdoors (and indoors where sole use of the premises is available).
- Graduations and formals are allowed within cohorts, either on school sites or at external venues – with COVID-safe plans in place and physical distancing adhered to.
- School sports are allowed, including inter-school sports and access to indoor and outdoor pools (from 1 November).
- Transitions and orientations are allowed. One fully vaccinated parent may attend these activities.

Parents and carers on site to support school operations

Fully vaccinated parents and carers will be allowed on-site to support curriculum delivery, student wellbeing activities and school operations (for example reading support, canteens, and uniform shops). Parents and carers must check in using the school check-in and show proof of vaccination on entry to the school site.

Further Updates

We are expecting further updates to guidelines in coming days and will keep you informed as they are published.

Staffing

- Theresa Moore will be joining our primary staff in 2021.
- The Principal position advertisement was published yesterday, with the expectation someone will be appointed before the end of the year.

Preschool Orientation

Today, we welcomed our seven 2022 Kindergarten enrolments for their first orientation session. Everyone left with smiles on their faces and looking forward to next week!

Amanda Thorpe - Principal

School news

Yearbook Cover Competition 2021

It's that time of year again when our school's yearbook is being planned and created. We are looking for creative and colourful entries for this year's cover, but they MUST meet the following criteria:

- Be on an A4 page
- Have a border around the edge of the page (no more than 1.5cm)
- Have the words "Tottenham Central School 2021 Yearbook" somewhere on the page
- Interesting and colourful illustrations

Reminder:
School Times



8:35am to 3pm Primary
8:35am to 3:15pm Secondary

Entries are to be left at the office NO LATER THAN Friday, 12 November (Friday Week 6). Thank you.

K/1 Science requirements for Week 6 and Week 7

For our STEM activity over the next two weeks, could children please bring:

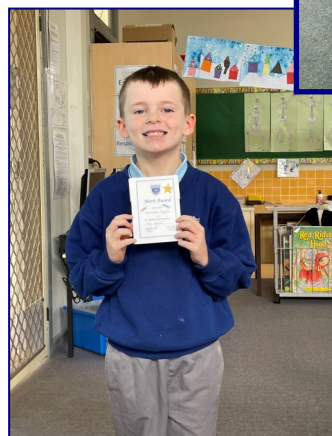
- Empty tissue boxes, muesli boxes or similar
- Plastic bottles
- Paper plates
- Paper or plastic cups
- Zip lock bags
- Plastic bags (any size)
- Plastic takeaway containers.

Thank you

Primary Sport

Those students eligible to attend the pool for sport this term will receive a note tomorrow. The note needs to be returned before next Wednesday to allow the students to go to the pool. Thank you.

Congratulations to all our PBL award recipients!



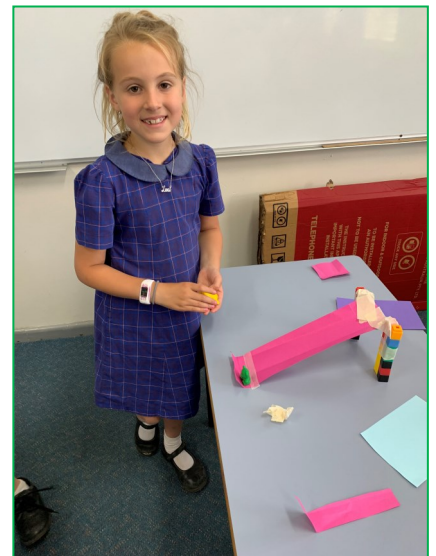
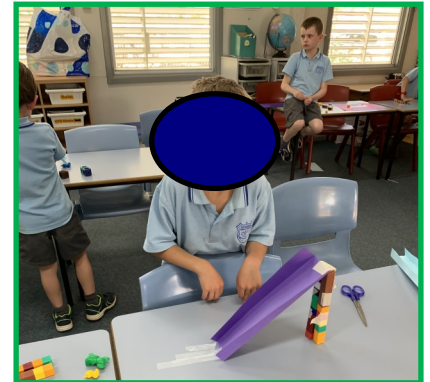
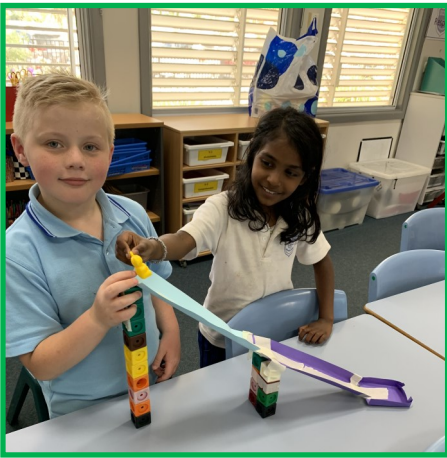
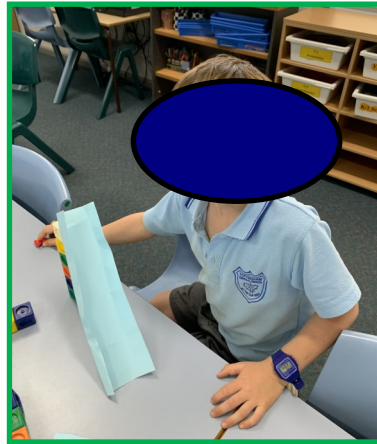
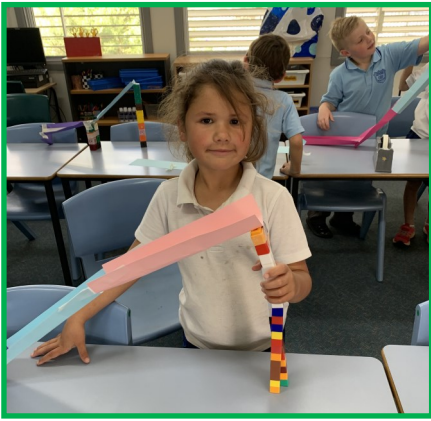
EXCELLENCE

RESPECT

RESPONSIBILITY

Primary news

K/1 investigating and making ramps in Science!



EXCELLENCE

RESPECT

RESPONSIBILITY

4/5/6 Science

Our 4/5/6 students have been designing & making 'Critter Houses'. They need to provide a water proof, safe shelter for insects (critters) during a storm. There has been lots of problem solving & redesigning when things have not quite gone to plan. Next week we will finish them off and put them to the test.



EXCELLENCE

RESPECT

RESPONSIBILITY

Secondary news

Secondary Assessment Schedule

| Week due | Stage 4 | Stage 5 | Stage 6 |
|------------------|---------|---------|--------------------------------|
| Term 4 Week 6 | N/A | N/A | Year 11 - N/A Year 12 - N/A |

Secondary Sport

Students will receive a note tomorrow to go to the pool for sport. The note needs to be returned before next Wednesday to allow the students to go to the pool.

Higher School Certificate Examinations

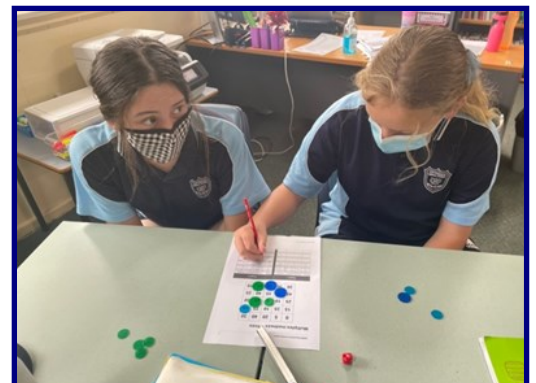
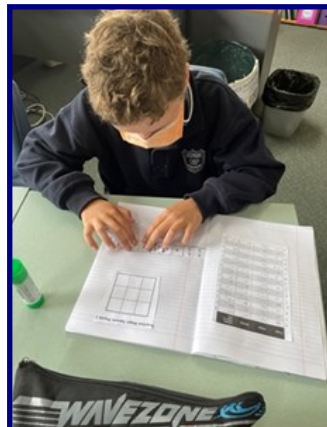
Good luck to Lachlan who starts the Higher School Certificate examinations next week.

Tuesday 9 November English Standard Paper 1

Wednesday 10 November English Standard Paper 2

Stage 4 Maths

At the beginning of the term, Stage 4 worked with direct numbers and the number plane. The students have used a variety of resources such as creating number lines, magic squares, games and computer programs to constantly consolidate their understanding.



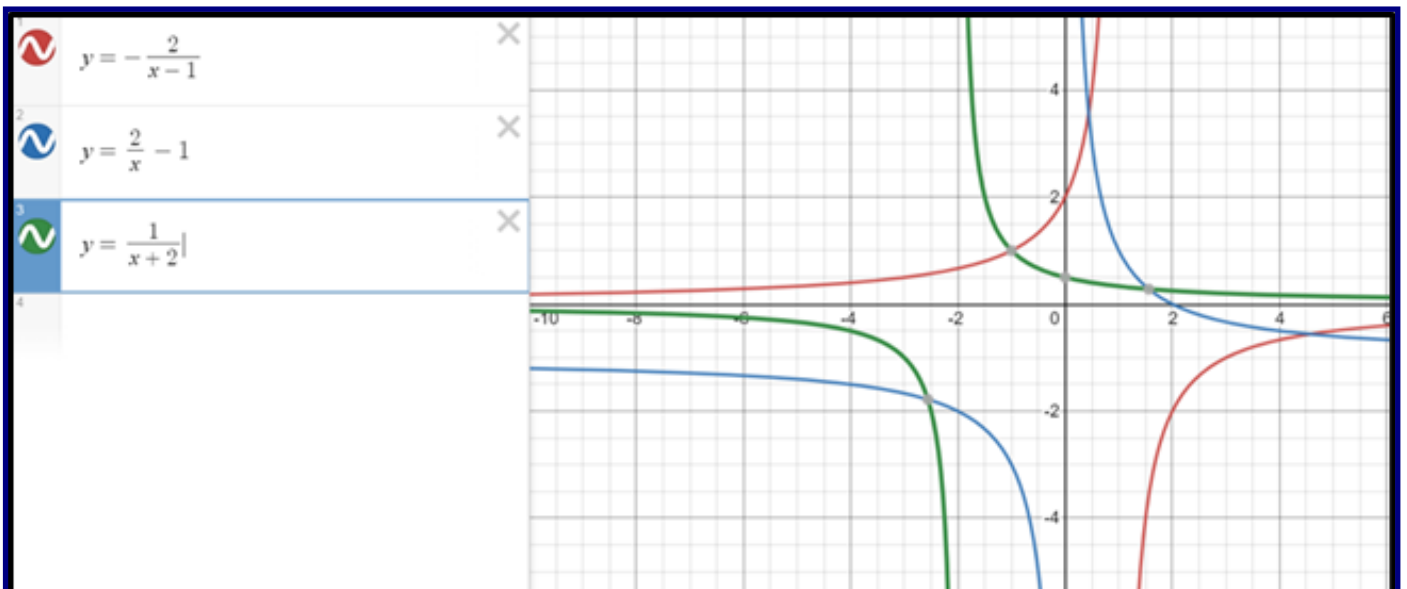
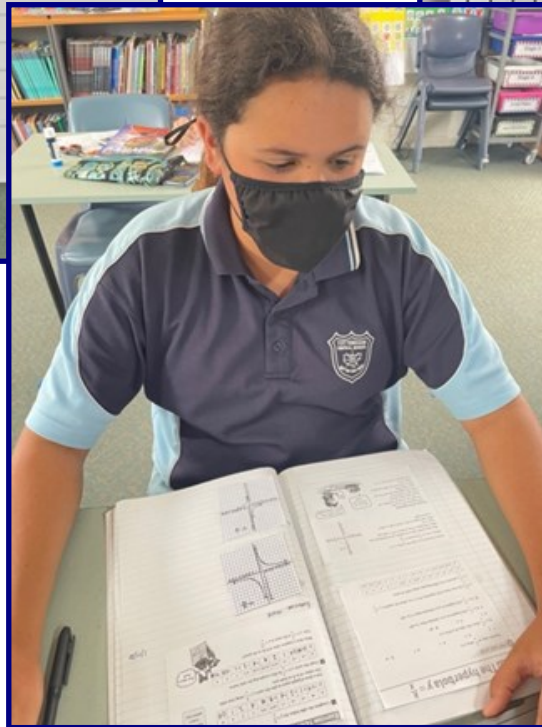
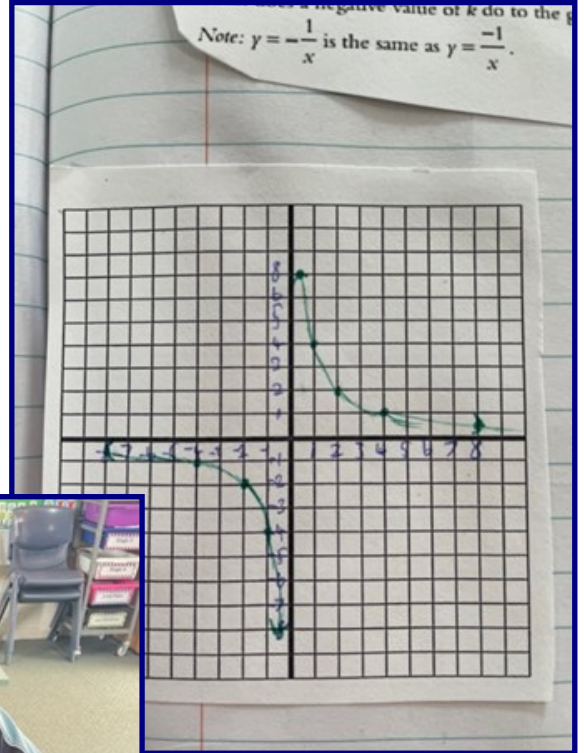
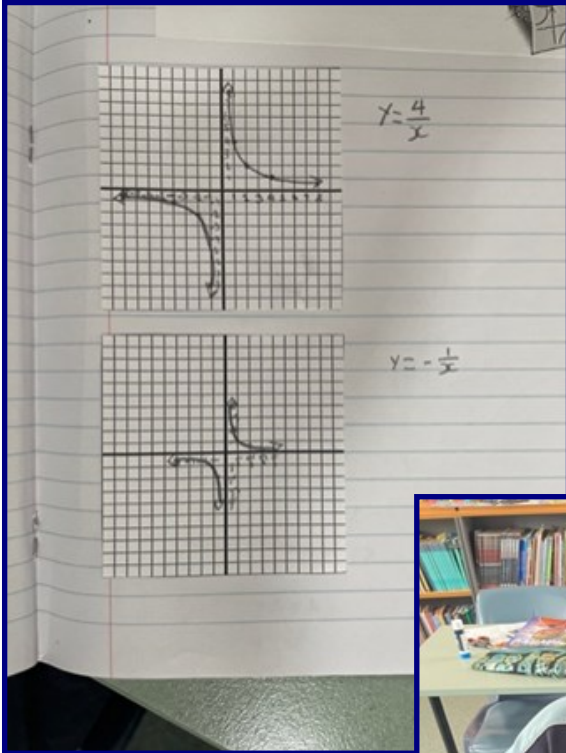
EXCELLENCE

RESPECT

RESPONSIBILITY

Stage 5 Maths

Stage 5 has been working extremely hard in maths. The students have been looking at geometry, and the different graphs which are used in life. The students have looked at hyperbolas, which are also used to measure the wake created by the shock waves of a supersonic boom.





CENTRE DIRECTOR/EARLY CHILDHOOD TEACHER

Are you looking for a tree change and adventure?? Tottenham Early Childhood Centre is offering a Part- time to Full time opportunity with a flexible work/life balance.

Our beautiful, vibrant and small, purpose-built, not-for-profit childcare centre is currently looking for a passionate and self-motivated Centre Director/Early Childhood Teacher. We offer above award wages and conditions in line with qualifications and experience.

Tottenham is a wonderful, family friendly and inclusive rural town in western NSW. This role offers face-to-face and dedicated administration time and would be well suited to someone who enjoys supporting diverse families, fostering community relationships and continuing with the amazing education already provided by our service.

Responsibilities

- Take on all duties and responsibilities of the Nominated Supervisor for a 20 place preschool and long day care
- Maintain effective records in line with National Regulations and EYLF
- Lead and evaluate the centre through the assessment and rating process
- Review and maintain policies and operating practices in line with changing legislation
- Complete appropriate forms for relevant funding bodies
- Develop and implement educational programs
- Administrative duties including enrolments, rostering, budgeting, funding etc
- Ensure the Centre is compliant with relevant legislations and laws
- Maintain effective working relationships, facilitate and encourage teamwork with educators and support staff
- Liaise with and report to Centre Management Committee
- Ensure WH&S principles and processes are adhered to for a safe place of work

Essential Requirements

- A current Working with Children Check
- Knowledge of relevant legislative policies, standards and requirements
- Excellent leadership, communication and management skills
- A sound understanding of EYLF & NQF

Desirable Requirements

- Experience in a Director role with proven abilities to manage a small size centre
- Early Childhood Teaching qualification (as recognised by ACECQA) or working towards.
- Recognised First Aid, Anaphylaxis and Asthma certification
- Child Protection training
- Strong computer literacy

Certificate III and Diploma trained staff are also able to apply for casual positions at the Centre.

Further information and details about the position are available from the Treasurer of the centre. Please contact Kylie Nicholson, Monday-Friday on 0424 139 216.

Applications including CV, cover letter addressing the selection criteria and 2 current industry relevant referees should be marked as 'Confidential-Recruitment' and emailed to – kylie.nic@hotmail.com Applications close 5pm 26th of November 2021

The Tottenham Early Childhood Centre is an equal opportunity employer. Selection is determined by merit to ensure employment of the best person for the job.

TOTTENHAM SWIMMING CLUB

COVID SAFE AND READY TO RACE FOR 2021/2022 SEASON!

Tottenham Swimming Club will be making its first splash for the season on Friday afternoon, **5 November** at Tottenham War Memorial Pool.



Our friendly group of parents welcome all returning families and extend a warm invitation to all new families to join in the fun each Friday afternoon.

Reasons to join Tottenham Swimming Club:

- ✓ For those children and/or families feeling a little unsure about swimming club, you are allowed to swim in the events for 3 weeks without having to register – so you have nothing to lose by coming along and joining in the fun!
- ✓ The NSW Government's \$100 Active Kids voucher covers **ALL** registration costs
- ✓ Supportive committee members can help parents register their children if unfamiliar with Swim Central online
- ✓ Cool down whilst having fun and fitness on a Friday afternoon
- ✓ Spend time with friends in a non-competitive environment
- ✓ Improve your swimming stroke style to become a safer swimmer
- ✓ Enjoy the beautiful facilities of our beautiful community pool
- ✓ **2021/2022 SEASON BONUS – FABULOUS & FREE WELCOME GIFT** to all children who register for Swimming Club.

Remember, **ALL** swimming abilities are welcome – ranging from non-swimmers in the *Dolphins* group (who can use flotation devices and noodles) to secondary children who have been swimming for years.

Don't hesitate to contact Chrissie Baldwinson (Swimming Club President) on 0428924375 or Amity Chase (Club Registrar) on 0402282542 with any questions – big or small!

NSW Department of Education

Why attendance matters



When your child misses school they miss important opportunities to:

- Learn
- Make friends
- Build skills through fun

Days missed = years lost

A day here and there doesn't seem like much, but...

When your child misses just... they miss weeks per year and years over their school life

1 day per fortnight = 4 weeks = Over 1 year missed

1 day per week = 8 weeks = Over 2.5 years missed

education.nsw.gov.au



COVID RULES APPLY

YOUTH CLUB UPDATE

- Thanks to Bailey and Warren for running Open House last week.
- Friday, 5th November Isaac & James Koning
- Friday, 12th November : Abby and Sheree Turner

Please make sure the sign-in book is completed as you enter and leave.

Remember, funds are available to run activities, put your thinking caps on.

WSPA TOTTENHAM PRESENTS

"Tribute to Disney"

December 9th - 7pm
Tottenham War Memorial Hall

Calendar/Other news

| | | | | | |
|----------------|--------------------------|------------------------|---------------------|---|-----------------------------|
| | | | | | |
| WEEK 5 | Nov 1 Secondary exams | 2 | 3 | 4 Preschool orientation | 5 Canteen |
| WEEK 6 | 8 HSC commences | 9 | 10 | 11 Preschool orientation Year 7 and 10 vaccinations | 12 |
| WEEK 7 | 15 | 16 | 17 | 18 Preschool orientation | 19 |
| WEEK 8 | 22 | 23 | 24 | 25 Preschool orientation | 26 |
| WEEK 9 | 29 | 30 | Dec 1 | 2 Preschool orientation | 3 WAP Graduation |
| WEEK 10 | 6 | 7 | 8 | 9 | 10 |
| WEEK 11 | 13 | 14 Presentation Day | 15 Class parties | 16 Last day of term | 17 Staff Development Day |

Canteen

Canteen is open this Friday the 5th of November.

The Salad-of-the-Day is Creamy Potato Salad with Egg.

Kathryn Klante
0401305002



Contact us

Principal Miss Amanda Thorpe

Assistant Principals Mrs Meggan Adam (rel.)
Ms Sally Fitzalan (Thurs-Fri)

Head Teacher Secondary Studies Mrs Sarah Lindsay

P&C President Mrs Sharon Medcalf

Tottenham Central School
42 Merilba Street
Tottenham
NSW 2873

Phone: 02 68924006
E-mail: tottenham-c.school@det.nsw.edu.au
We are on the web and Facebook:

www.tottenham-c.schools.nsw.edu.au

Tottenham Central School



Your say

You are encouraged to use this space to give us any feedback on things which you feel you need to: Congratulate a student, teacher or parent, let us know what you think of the newsletter format, make a suggestion or request.

Signed: _____



We would like to pay our respects and acknowledge the traditional custodians of the land, and also pay respect to Elders both past and present.



Tottenham Central School Summer Uniform Order

Please
return by
Friday, 5
November
2021

Family name: _____

| SUMMER SCHOOL UNIFORM | COLOUR | SIZES | PRICE | SIZE | QTY. | PRICE/UNIT | SUBTOTAL |
|---|---------------------------------|------------------------------|-------------------------------|------|------|------------|----------|
| Short Sleeve Polo shirt Primary Girls | White/royal emblem | 4-16Y 14S-22/2XL | \$20.00 \$25.00 | | | | |
| Short Sleeve Polo Shirt Primary Boys | Sky/royal trim and emblem | 4-16Y | \$20.00 | | | | |
| Boys Gaberdine Shorts Boys Gaberdine Cargo Shorts | Grey Grey | 4-16Y/ S-2XL 4-16Y | \$13 / \$16 \$16.00 | | | | |
| Boys Gaberdine Long Pants Boys Gaberdine Cargo Pants | Grey Grey | 4-16Y/ S-2XL 4-16Y | \$17 / \$21 \$22.00 | | | | |
| Boys Gaberdine Double Knee Long Pants | Grey | 2-16Y | \$18.00 | | | | |
| Girls Primary Summer dress | Tartan | 4-8 10-16 | \$45.00 \$48.00 | | | | |
| Girls Primary short | Tartan | 4-20 | \$44.00 | | | | |
| Primary V-Neck Sweat Shirt | Dark royal | 4-16Y 14S-24/3XL | \$20.00 \$25.00 | | | | |
| Primary Microfibre Bucket Hat | Dark royal | S/M or M/L | \$12.50 | | | | |
| Secondary Short Sleeve Polo shirt | Dark Navy/Sky Blue | 4-2XL | \$25.00 | | | | |
| Girls Secondary Skirt | Navy | G L | \$27.00 \$32.50 | | | | |
| Girls Secondary Skort | Navy | G L | \$17.50 \$22.00 | | | | |
| Girls Secondary Short | Navy | All sizes | \$27.00 | | | | |
| Secondary Fleece Polo Neck Sweat Shirt | Dark navy | 12-16Y S-3XL | \$20.00 \$25.00 | | | | |
| Secondary Cap | Dark navy | OFSA | \$15.00 | | | | |
| SPORT UNIFORM | COLOUR | SIZES | PRICE | SIZE | QTY. | PRICE/UNIT | SUBTOTAL |
| Short Sleeve Sports Polo Shirt | Royal/white with emblem | 4-16Y 14S-22/2XL | \$20.00 \$25.00 | | | | |
| Sport Jumper half zip polar fleece | Dark Royal | 4-16Y | \$25.00 | | | | |
| Microfibre Sport Shorts Saunders (short leg) Ross (longer leg) | Dark royal | 4-16Y 2-16Y 14S-24/3XL | \$14.00 \$12.00 \$14.00 | | | | |
| Microfibre Track Pants Straight Leg Zip cuff (4-16Y only) | Dark royal | 4-16Y 14S-24/3XL | \$24.00 \$27.00 | | | | |
| House Polo Shirt | Red or yellow | 4-16Y 14/S- 24/3XL | \$11.00 \$15.00 | | | | |
| MISCELLANEOUS ITEMS | COLOUR | SIZES | PRICE | SIZE | QTY. | PRICE/UNIT | SUBTOTAL |
| Art smock | Gingham | OSFA | \$13.00 | | | | |
| Ankle socks | White (girls) Grey (boys) | 9-12 13-3 2-8 | \$2.50 a pair | | | | |
| School backpack | Dark royal | 28L capacity | \$26.00 | | | | |
| Excursion/swim bag {waterproof} | Dark royal | 46x36cm | \$ 6.00 | | | | |
| Library bag | Dark royal | 38x26cm | \$ 6.00 | | | | |

TOTAL \$ _____



Orders can be paid online using a credit card through the 'Make a Payment' option on the school's website:
tottenham-cschools.nsw.gov.au

Please note the receipt number on this form when returning it to the office. Thank you.

I paid online _____ (date). Receipt number: _____