

Tottenham Central School



Principal: Amanda Thorpe

Week 2 Term 4

Thursday, 14 October, 2021

Principal's message

Arriving at School

Please be reminded that students should not arrive at school/be on school grounds before 8:35am each morning. We currently have a large number of students here well before this time.

Check-in Assessment

Students in Years 3-6 and students in Years 7-9 will participate in a reading and numeracy Check-in assessment.

The Check-in assessment is a NSW Department of Education online reading and numeracy assessment available to support schools to assess and monitor student learning.

The assessments can supplement existing school practices to identify how students are performing and to help teachers tailor their teaching more specifically to student needs.

The assessment will be scheduled early in Term 4.

Students with a disability may receive the same level of support during the assessment that they would normally receive in the classroom.

Captain Speeches

On Tuesday, Isaac, Kayla and Maddi presented speeches to our students and staff in their bid to become the next TCS school captain. Isaac, Kayla and Maddi were required to do their speeches over Zoom due to current restrictions, and despite this hurdle, did a fantastic job. All speeches were well presented, thought out beautifully and delivered exceptionally. Congratulations to Isaac, Kayla and Maddi! The announcement will be made soon.

Concert update

Unfortunately under current restrictions, we are unable to prepare for what was going to be our wonderful 'Troy Story' concert at the end of the year, therefore have made the very tough decision to cancel.

Excursion funds update

As was mentioned in last week's newsletter, due to COVID we have had to cancel our school excursions to Canberra and Wambangalang that were proposed for this term. We do anticipate visiting Wambangalang and Canberra with similar itineraries next year, and as such will hold any money already paid towards these excursions, as fees in advance. For students who will not be enrolled in our school next year, we have either refunded payments or transferred monies paid, to a sibling.

If you do not wish to keep your payments as fees in advance please contact the office to discuss the matter further. Thank you.

Perpetual Trophies

Perpetual Trophies awarded at Presentation Ceremony last year need to be returned to the office to allow for this year's Presentation Ceremony to be organised.

Amanda Thorpe - Principal

NSW Department of Education

School Visitor Check-in



All visitors and contractors are required to check-in at the front office at all times.

education.nsw.gov.au



School news

School Visitor Check-in

A single School Visitor Check-in system for every school across the state is coming from 18 October! The Department of Education has partnered with Service NSW to provide a streamlined, digital school sign-in system for visitors and contractors at every NSW government school.

Benefits of the new system include:

- Accelerating your check-ins to as fast as 20 seconds!
- Linked to NSW Health's COVID-19 contact tracing ensuring every school is compliant with the NSW [COVID-19 mandate](#).
- Giving every school greater access to streamlined NSW Government services.

Watch our short [parent video](#) to see how it works for parents.

Who can use School Visitor check-in?

- Visitors such as parents and carers, contractors, service providers and volunteers.

Students or visitors under the age of 18 are not required to use School Visitor Check-in.

School Visitor Check-in will be ready from 18 October at all NSW Government schools. For more information visit School Visitor Check-in on the department website.

Book Club

Book Club orders are due back to school by Friday, 22 October. Please make cheques payable to Tottenham Central School.

PBL Merit Award recipients for Terms 3 and 4 - Congratulations!



PBL Merit Award recipients for Terms 3 and 4 - Congratulations!



Music classes

With COVID restrictions continuing to affect our music lessons at the moment, our music classes have been making use of learning about rhythm and beat, using a variety of instruments including our hands, knees, drums and many others.



EXCELLENCE



RESPECT



RESPONSIBILITY

Primary news

4/5/6 Creative Arts

Together we have been looking at optical illusions, and completed one of our own.



4/5/6 Cakes

Inspired by Wayne Thiebaud, the students have been busy working on their own cake art. Wayne is an American painter best known for his still lifes of edible treats and every day objects in his singular illustrative style. His most popular subject matter includes colourful cakes, slices of pie and candy pieces.



Secondary news

Secondary Assessment Schedule

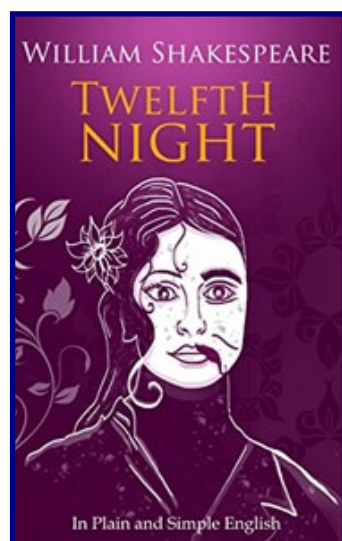
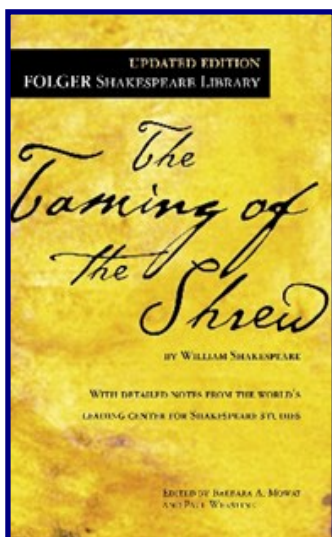
| Week due | Stage 4 | Stage 5 | Stage 6 |
|------------------|---|--|--------------------------------|
| Term 4 Week 3 | PDHPE, Agriculture, Science, Geography | Agriculture, Science, Industrial Technology | Year 11 - n/a Year 12 - n/a |

Secondary English

Our various secondary English courses are all currently completing studies of Shakespeare and/or film, before undertaking yearly examinations in several weeks.

Lachlan has now officially finished his HSC English and Drama courses, and is now revising for his upcoming HSC examinations which begin on 9 November.

Chrissie Baldwinson



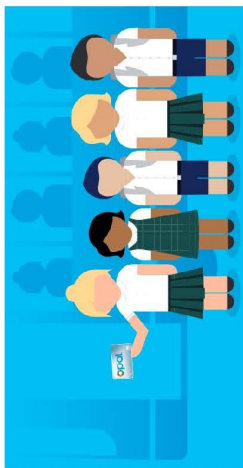
Secondary Mental Fitness/Mufti Day

As part of Mental Health week, tomorrow, secondary students will be participating in a session with the Black Dog Institute at 2pm on Mental Fitness. This will focus on building mental health, wellbeing and resilience. Secondary students are able to wear mufti tomorrow.

Secondary BEAUT Program

Secondary students who have achieved 90% attendance and 90% in all other areas, will celebrate with a free lunch from the cafe tomorrow. Invitations were emailed yesterday to those families.

School Travel for 2022



2022 school travel applications are now open

Students who need a School Opal card or travel pass for 2022 can [apply](#) now. A new application will need to be submitted if they are applying for a school travel pass for the first time, or if they are requesting an additional travel entitlement as a result of a new shared parental responsibility situation (e.g. joint custody).

Students who change address, school, campus location, or who have repeated a year or received an expiry notification from Transport for NSW for their school travel entitlement should [renew or update](#) their details before **the end of term 4**. This will ensure that schools can endorse applications and current entitlements are updated and remain valid. School Opal card holders will have the changes applied to their existing card.

If a student's distance eligibility has changed based on their grade the system will automatically update their entitlement if they meet the new criteria. If they do not meet the new [eligibility criteria](#), they will receive an expiry notification via email.

Students who have an entitlement approved under a medical condition that is due to expire will receive a notification advising them to re-apply.

[Term Bus Pass](#) holders will receive a notification to re-apply.

Students in the Opal network applying for an Opal card (including a Term Bus Pass) for the first time will receive their Student Opal card at their nominated postal address. Cards will be mailed out from January 2022.

Students living in rural and regional (R&R) areas should receive their travel pass at the start of the new school year from their nominated transport operator. It may come via the school or be sent directly to them at home. **Note:** some R&R operators do not issue travel passes. Students/parents should confirm with their nominated operator if they do not receive a pass.

School Student Transport Scheme site change

On 1 October 2021 the School Student Transport Scheme (SSTS) information and application portal was moved to transportnsw.info. This will assist families to find all their travel information in the one place.

Travel from Term 1 2022

We ask that parents plan ahead and make sure their child knows which service/s to use and has a valid ticket to travel: either a School Opal card or Child/Youth Opal card (within Greater Sydney) or a School Travel Pass (outside Greater Sydney), from the start of the school year.

Applications for the School Student Transport Scheme (SSTS) open at the start of Term 4 2021 for travel in 2022, so parents/students can [apply](#) or [update](#) details early and be ready for the start of the new school year.

Most students using the Opal network will not need a new Opal card and can continue travelling on their existing card each year.

The start of the year is a difficult period for local bus operators, and students travelling without a valid ticket make service planning and operations increasingly difficult.

We recognise that for some families last minute changes to school enrolments mean they may not have a School Opal card or Travel Pass for the start of term. In the Opal network, we strongly encourage these families to have their children travel on a Child/Youth Opal card until they receive their valid School Opal card. If outside Greater Sydney, parents should contact their [local bus operator](#) to discuss their travel needs.

Bus operators are flexible and understanding, particularly at the start of the school year, and will ensure students can travel safely to and from school. But to best support our operators we encourage all students to have a valid ticket, as early as possible, from the start of the school year.

Please also remember that students using Opal cards must tap on and tap off in line with the [Student code of conduct](#) and [Opal terms of use](#).



Further information can be found at transportnsw.info/travel-info/using-public-transport/school-travel
Enquiries can be submitted at transportnsw.info/contact-us/feedback/passes-concessions-feedback

Other news



Election workers wanted

Apply to work at your local council election

Local council elections take place on 4 December 2021. We are looking for people to work at these elections. Working at the election is a good way to earn some money, learn new skills and help your community have their say.

To find out more visit
elections.nsw.gov.au



Teaching a learner driver?



Get information and practical advice at a free workshop.

Online workshops

Wednesday 13th October 2021 5.30pm to 6.45pm or
Wednesday 27th October 2021 5.30pm to 6.45pm



Book now

Via Eventbrite,
the Councils' Facebook
pages or (02) 6861 2364.
Bookings Essential.

Tottenham Multipurpose Health Service (MPS)

Phone: 0268916200
National Coronavirus Health Information Line on 1800 020 080

PUBLIC NOTICE

<https://www.health.nsw.gov.au/infectious/covid-19/Pages/racf-latest-advice.aspx>



Visitors

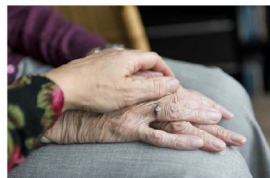
From 11 October 2021 Tottenham MPS aged care residents can have **two** visitors **per day** provided:

- they are aged 12 years and over AND
- have received a second dose of a COVID vaccination at least **14 days** prior to their visit

All visitors **must** wear a surgical mask while visiting indoors. Apart from end of life visits, visits may be permitted in either the resident's room or an outside area but not in any inside communal areas.

Visitors must **not** enter the aged care facility at all if they:

- have been to any [close, casual or monitor for symptoms locations](#) in NSW OR [Victoria](#), [Queensland](#), and the [Australian Capital Territory](#) OR [New Zealand](#) in the last 14 days
- have [COVID-19 symptoms](#)
- are a close contact of a person with confirmed COVID-19 and are within their isolation period.
- live in a household with a person who is currently isolating.
- are waiting for a COVID-19 test result.



Tottenham MPS Aged Care Residents

Aged care residents can leave the facility and attend family gatherings or for other reasons but must abide by the current Public Health Order.

[Public Health \(COVID-19 General\) Order 2021](#)

Book your free breast screen at our clinic in **Tottenham.**



Where

Tottenham Multi-Purpose Health Service

When

Saturday 30th October –
Monday 1st November, 2021



We recommend women aged 50 - 74 have a mammogram every two years.
Book your free mammogram online at book.breastscreen.nsw.gov.au or call 13 20 50.

Calendar/Other news

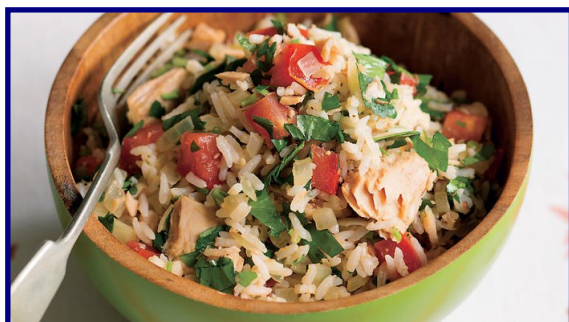
| WEEK 2 | 11 | 12 | 13 | 14 | 15 Canteen |
|---------------|-------|----|----|----|---------------|
| WEEK 3 | 18 | 19 | 20 | 21 | 22 |
| WEEK 4 | 25 | 26 | 27 | 28 | 29 |
| WEEK 5 | Nov 1 | 2 | 3 | 4 | 5 |

Canteen

Canteen is open this Friday the 15th of October.

The Salad-of-the-Day is Brown Rice Salad with Tuna.

Kathryn Klante
Canteen
0401305002

**COVID RULES APPLY****YOUTH CLUB
OPEN HOUSE**

- Thanks to Bailey and Warren for running Open House last week.
- Friday, 15th October, Maddi & Kristy
- Friday, 22nd October: Drew, Ben and Lib

Remember, funds are available to run activities, put your thinking caps on.

Contact us

Principal Miss Amanda Thorpe

Assistant Principals Mrs Meggan Adam (rel.)
Ms Sally Fitzalan (Thurs-Fri)

Head Teacher Secondary Studies Mrs Sarah Lindsay

P&C President Mrs Sharon Medcalf

Tottenham Central School
42 Merilba Street
Tottenham
NSW 2873

Phone: 02 68924006
E-mail: tottenham-c.school@det.nsw.edu.au
We are on the web and Facebook:

www.tottenham-c.schools.nsw.edu.au

Tottenham Central School

**Your say**

You are encouraged to use this space to give us any feedback on things which you feel you need to: Congratulate a student, teacher or parent, let us know what you think of the newsletter format, make a suggestion or request.

Signed: _____



We would like to pay our respects and acknowledge the traditional custodians of the land, and also pay respect to Elders both past and present.

Tottenham Community Christmas Tree Sunday 12th December 2021

Activities begin in the Tottenham Memorial Park from 6.00pm, with a BBQ available at about 6.30pm.

If you wish your child/grandchild/relative (newborn to Year 6) to receive a gift from Santa on the night, please fill out the form below and return to Tottenham Central School, Tottenham War Memorial Early Childhood Centre or Tottenham Post Office. Cost is \$10 per child. **Envelopes or emails must clearly read "CHRISTMAS TREE – FAMILY NAME"**. Families may direct deposit using Branch Number: 082-897, Account: 50- 995-6056, Account Name: Tottenham Christmas Tree. Please use Family name as reference and email family details to nalasha.levick@yahoo.com

This night is made possible with the continued support of local businesses, organisations and the Lachlan Shire Council.



Contact Alicia Campbell on 045 949 093 or Tash Levick on 0457 230 557 with any enquiries.



Form & money MUST be received by Monday 18 October.

| Child's Name | Age | School Class | Boy/Girl | Payment (\$10 per child) |
|--------------|-----|--------------|----------|--------------------------|
| | | | | |
| | | | | |
| | | | | |
| | | | | |
| | | | | |
| | | | TOTAL | |

PAYMENT WAS MADE BY (please circle): Online/ cash

Parent/ Guardian Name: _____ Contact Number: _____

